



Apple Pickin's

A Macintosh Computer User Group Publication

The iPad's Charging Challenge Explained

by [Dan Frakes](#),
[Macworld.com](#)

Mar 23, 2012 6:29 am

Editor's note: We've revised this article to include information about charging the third-generation iPad.

See NWAP Editor's note on page 4 regarding links in this article

If you've recently taken possession of a shiny new iPad, you may have noticed an odd message when connecting the tablet to some computers or USB chargers: the words *Not charging* in the iPad's status bar. Or maybe you've plugged a third-generation iPad into Apple's official charger while you're using the tablet, and later noticed that it doesn't seem to have charged at all. Or perhaps you've left the new iPad to charge and it seems to be taking longer than with your older iPad.

Why? Compared to iPhones and iPods, the iPad simply has more-demanding charging requirements—and for the latest iPad, those demands are even more challenging. Some USB ports, especially those on older computers and many USB hubs, don't provide enough power to charge an iPad when the screen is on. And with the third-generation iPad, even Apple's own charger can struggle at times. What this means is that whether or not a particular USB port or charger

(Continued on Page 3)

Word Wrap April 2012

By Bob Moffat

It is the best of times. It is the worst of times. We are being led by incompetent boobs who should be replaced by folks who know what they are doing. We are being led by folks who know what they are doing who should not be replaced by incompetent boobs. Things aren't like they used to be. Or are they?

Several weeks ago the news media began examining the suppliers who assemble Apple products in China and elsewhere. A dramatic recounting of his visit to Apple's Chinese factory by a performance artist fanned the flames of controversy at the time. The artist has since apologized for misleading audiences: his dramatization was based on some facts and some fictions.

The controversy arrived just as Apple had announced some amazing record sales. Their products and services are reaching a

(Continued on Page 5)

INDEX

| | |
|-------------------------------|----------|
| Calendars | 8 |
| Contact Us..... | 2 |
| Editor's Corner..... | 2 |
| General Meeting Report | 7 |
| iPad Charging Challenge | 1, 3 & 4 |
| Membership Report | 7 |
| Mortvedt Session..... | 6 |
| New User Report | 6 |
| Red Chip Info..... | 2 |
| South Sound AUG Info..... | 6 |
| Word Wrap..... | 1 & 5 |

April 2012
Vol. XXVIII
No.4

New User Meeting
Thursday
Apr 7th
7:00 - 9:00 p.m.

More Apps
That
Connect Us

General Meeting
Sunday
Apr 15th
3:00 - 5:00 p.m.

Basic Text Tips
Pages & TextEdit

Meeting Locations

The New User & General Meetings are typically held at the Lakewood Public Library

Located at the southwest corner of Gravelly Lake Drive and Wildaire Road.

<http://www.nwapplpkrs.org>



A Macintosh Computer User Group Serving Pierce County Washington



EDITOR'S CORNER



10 years ago the USA had Steve Jobs, Bob Hope and Johnny Cash

• • • •

Now they have no Jobs, no Hope and no Cash

But at least we have Lee Peden and Glenda Alley.

Thank you ladies very much !

I hated the thought of shutting down the newsletter.

Your editor has went to approximately 7 base ball games in his almost 71 years. 5 of those have been this year "working". Both Gloria & I have enjoyed participating in Baseball Spring Training as "Surprise Sundancers" a volunteer group of over 700 locals who provide support at the City of Surprise Ball Stadium.



iCame, iSaw, iConquered

NorthWest Apple Pickers

NWAP is an Apple Macintosh User Group which meets the second Sunday of the Month. Annual Dues are \$35 for an individual or a family. Send inquiries to P.O. Box 99388, Lakewood WA 98496-0388

www.nwapplpkrs.org

Articles printed in this newsletter are available in plain text formats and on the NWAP website. Some articles have been edited to fit space in the paper copy and may appear unaltered on the web site.

Original articles appearing in this publication are copyrighted and may be reprinted without prior approval provided proper credit is given. Syndicated articles may be reprinted but MUST be obtained from original source. APCUG articles may only be published by APCUG member groups and MUST be obtained directly from APCUG.

Names of companies and products used herein may be trademarked.

Article & photo submissions may be sent via email to:

ApplePickens@me.com

Please submit photos in color and actual size. The editorial staff will edit for use in the newsletter.

NWAP & TAPCUG members may place "Buy/Sell" item on the NWAP website. Send an e-mail to campej@comcast.net and provide details concerning the item(s) that you wish to buy or that you have for sale.

Since your entire email will be posted as a PDF file, please keep the "for sale" items and the "wanted" items in their own appropriate email.

Tacoma Area PC User Group

NWAP and TAPCUG, a PC user group, are two organizations working together to support the Macintosh and PC platforms in the Greater Tacoma/Pierce County area. TAPCUG meets the second Saturday of each month. Send inquiries to: 6824 19th Street West PMB #170, University Place WA 98466.

www.tapcug.org

Board of Directors

Peter Winderling.....President
Lee Peden.....Vice President
Glenda Alley.....Secretary
Eldon Estep.....Treasurer
Francette Beeler.....Membership
Fred Battié.....Director
Bob Moffat.....Director
Val Dumond.....Director

Special Thanks

Dawne Aho.....Mortvedt Coord.
David Putman.....Editor
Volunteers.....Red Chip & Sign-In
Loretta Chamberland.....Club Info
Bob Moffat.....New User SIG,
Assistant Editor & Proof Reader
Webb Olliphant.....Magazine &
Book Exchange Project
Open Position.....Publicity,Book Review
Peter Winderling.....Apple Ambassador

Help & Information

General Club Matters..... Peter Winderling 253-536-1165
(5 p.m.-8 p.m. weekdays & 9:30 a.m. < > 8:30 p.m. weekends)
New User (OS 10)Bob Moffat, 253-845-5233 (any)
Legacy (OS 8 & 9).....Webb Olliphant, 253-584-7473 (1-9 p.m.)
Editor.....David Putman, 253-307-0544 (8 a.m.-7 p.m MST.)
Website DesignErick Camp, campej@comcast.net
(If you need help with a particular program, please contact us

holstein@nwapplpkrs.org

See our website for maps and driving directions all meetings:

www.nwapplpkrs.org

Red Chip

Buy your tickets, build the jackpot.

Mar. starts at \$17.00

NorthWest Apple Pickers Annual Meeting

March 11, 2012

President Winderling called the Annual Meeting to order at 3:04 in the Lakewood Library Meeting Room, for the purpose of electing directors for the 2012-13 term, in accordance with the Bylaws.

The slate of candidates was presented:

| Position: | 2012 Officers: |
|----------------|------------------|
| President | Peter Winderlin |
| Vice President | Lee Peden |
| Treasurer | Eldon Estep |
| Secretary | Glenda Alley |
| Membership | Francette Beeler |
| At Large | Val Dumond |
| At Large | Fred Battié |
| At Large | Bob Moffat |

A motion to accept the slate was seconded and passed.

There being no further business, the Annual Meeting was adjured at 3:07.

(Notes by Bob Moffat)



The iPad's Charging Challenge Explained

can charge the iPad's battery—and how quickly—depends on which iPad you have and how it's being used.

Here's a quick summary of options and information, based on our experiences, Apple's [support site](#), and information provided to *Macworld* by Apple:

Fastest charging - iPad charger: For the fastest charging of any iPad, use the iPad's included **10-Watt USB Power Adapter** or a third-party charger certified for fast-charging an iPad. This will fully charge a first- or second-generation iPad in a few hours, even if you're using the iPad at the same time; the third-generation iPad will take a bit longer, as explained below.

Slower charging - high-power USB port: When connected to a high-power USB port—such as one on a recent Mac, Apple's **USB Power Adapter for iPhone**, or third-party chargers certified for the iPhone—a first- or second-generation iPad will charge, even during use, but more slowly. (Some third-party USB hubs provide higher-power USB ports, but many don't; similarly, the USB ports on many Windows PCs don't provide this additional power.)

Slowest charging - lower-power USB port: When your iPad is connected to a lower-power USB port—those on older Macs, many Windows PCs, and many USB hubs (powered or unpowered)—the battery is charged only while the iPad is asleep. If a first- or second-generation iPad is awake and in use, its battery essentially holds its current charge level. What's confusing here is that the message *Not Charging* appears in the menu bar when the iPad is awake, which might lead you to assume that the offending USB port can never charge your iPad. But rest assured that once you put the iPad to sleep, the battery will charge.

The third-generation iPad: The **newest iPad** has even heftier charging requirements than its predecessors, for a couple reasons. First, it has considerably more battery capacity than the first two iPads—42.5 watt-hours, compared to 25 watt-hours—so even at the fastest rate of charging, the third-generation iPad takes noticeably longer to fully

(Continued on Page 4)

The iPad's Charging Challenge Explained

charge. (And, in fact, according to **testing by DisplayMate**, the new iPad's battery doesn't reach a full charge until about an hour *after* its battery meter displays 100%.) So no matter how you charge, it will take longer to fully charge a third-generation iPad than either previous iPad.

Second, though every iPad model charges more slowly if you're using it while charging, this slowdown is much more noticeable on the third-generation iPad because the new iPad's electronics—its screen, processor, and the like—require more overall power than the previous models' components.

What this means is that the first three charging guidelines above apply differently to the latest iPad. For starters, some users report that even when using Apple's 10-Watt power adapter, if you're doing processor- and graphics-intensive tasks such as playing a demanding video game, and you've got the iPad's brightness set to maximum and Wi-Fi or cellular data enabled,

<http://www.pcworld.com/article/252326/>

it may seem as though the battery isn't charging at all. During other tasks, the tablet might instead charge very slowly. Using a high-power USB port, a third-generation iPad will charge slowly when asleep, but generally not when in use—in my testing, a 2010 iMac's USB port held the battery level steady while I watched video at medium brightness. And when connected to a lower-power USB port, the iPad will charge—very slowly—only when asleep; when in use, a third-generation iPad will likely use more power than it gets, resulting in a gradual decline of battery level (although at a slower rate than if the iPad wasn't connected to power at all).

How you use it matters: Because the iPad's screen is such a huge part of the tablet's power drain—especially on the third-generation iPad—your own experiences will vary depending on the your preferred brightness level. Most of the observations above were based on screens set to roughly 50- or 60-percent brightness. If you set an iPad's screen to full brightness, it will take longer to charge while in

(Continued next column)

The iPad's Charging Challenge Explained

use than if it's set to medium brightness. In fact, with a third-generation iPad set to maximum brightness, the battery level may even decline when connected to a high-power USB port. Similarly, actively using Wi-Fi or a cellular-data connection will lengthen the charging time, as will playing a demanding game or streaming high-definition video. On the other hand, if you've got your screen brightness set to the lowest level and you aren't accessing a network, your in-use charging time will be shorter.

The takeaway here is that if your iPad's battery seems to take a long time to charge—or, for owners of a third-generation iPad, even longer than before—there's nothing wrong. The tablet is just hungry (or hungrier) for power. But by keeping an eye on how you charge the iPad, and what you're doing while you're charging it, you help it charge more quickly

###

NWAP Editor Note:

This article was copied from our MacWorld's subscription ~ see the link below.

Because this article is printed I have indicated the "Hot Links" by bolding & underling them.

For the online article go to this link.

<http://www.macworld.com/article/1150356/ipadcharging.html>

Word Wrap

(Continued from Page 1)

wider number of users around the World and many competitors are scrambling to remain relevant. The computer market has begun to merge with its younger technology siblings--the smartphone and tablet (not to mention the iPod family and competing products.)

Today's market is a dramatically different one from a decade ago: Mac OS X 10.1 Puma was delivered on iMacs (the first flat panel models) that could also run OS 9.2 while the first generation iPod with scroll wheel was only 5 months old. Remember, Windows XP had also been on the market for just 5 months in March 2002. Both platforms served a growing market in the decade as business expanded and consumers discovered the Internet and became interested in portability. The smartphone market changed with the iPhone's introduction in 2007 as consumers discovered they could carry a small computer around in their pockets. The market underwent another shift in 2010 when the iPad carved a new niche in the realm of personal computing.

Computers, phones, MP3 players, and tablets may be designed in the USA, they are mostly constructed from parts produced in and assembled in other countries. Chances are any such device you find on the shelf at your local technology store was imported to this country. Major computer brands may sold by companies based in California, Texas, Beijing, Seoul, Tokyo, or Taipei. That's the way it is and has been for years. In fact, most of the electronic and electrical appliances sold in this country likely shipped from factories abroad.

The recent drama about the Apple suppliers raises many fundamental concerns. First of all, there are basic questions about working conditions, worker safety, and compensation which are legitimate concerns. Period.

These concerns (should) apply to all factories that supply parts or assemble products brought to our shores for sale (and should include accountability for the safety and purity/quality of materials used.) Real world economics and politics likely mean that production locations will continue to flow to other countries around the world--labor costs are just one of the factors that drive this migration. The incentive to build a factory and acquire contracts to produce a product that will be sold throughout the world leads governments and entrepreneurs to compete for business. Companies that contract for these goods and services must be vigilant and hold their contractors accountable.

At the end of the day, there are no simple answers to resolve the unsettling questions that have been raised.

(Continued Next Column)

Word Wrap

(Continued from Previous Column)

Can we require or should we expect companies operating in China, Thailand, or Brazil to pay American wages and observe work rules? Should we insist that our Local, State, or Federal government provide the investment to build new manufacturing "centers" that co-locate many suppliers to create the efficient production some overseas sites enjoy? What is the nature of the basic contract between employer and employee? between community and citizen?

Employees who produce Apple products in Shenzhen, China, come from all over the country to compete for jobs at the factories because they consider the terms of employment desirable, according to some investigative reports. Another analysis indicated that the labor portion of production costs for these products is small in relation to the cost of materials used (implying that even if wages were much higher, the overall cost of the products would not increase prohibitively.) Another evaluation of the topic indicated that plentiful labor willing to do hand assembly lowers the incentive to invent automated machinery to improve productivity (and American workers have very high productivity because of automation.) These issues are not easily defined. The points of contention are not resolved with simple answers. (This is reality, after all, not an election campaign.)

Things are not like they were. Things never will be whatever way they were--again. Decade after decade, the world has changed for the better and the worse. We need to keep thinking about what those changes mean, how we can adapt to them, and when they must be adapted to our needs.

Just one man's opinion.



New User Report

By Bob Moffat

The March 1st New User Group looked at some of the changes that Lion 10.7 has introduced for the Mail.app and for Safari. Each of these applications have been changed to incorporate some new features. Mail has a new layout that is similar to the way it appears in iOS 5 on the iPad and iPhone/iTouch. The "Classic" view of the earlier versions can be reinstated via Preferences, if the user wishes. Basic e-mail management remains the same and browsing in Safari also proves to have few surprises. The browser toolbar layout has been slightly revised but is quickly mastered. Our review included tours of the Preferences for both applications to review privacy, security, and appearance settings.

We also paid a visit to the App Store (during the final 24 hours countdown to the 25 billionth purchase) to look at the way to navigate the site and to look at how to learn details about specific programs.

The April 5th meeting will review some more of the Lion features that rely on Internet connections, such as iTunes, iChat, and FaceTime, which also have equivalent applications on the iOS 5 iDevices. There will also be time to discuss the latest product announcements from Apple (scheduled for March 7th.)

Please join us at the Lakewood Library on Thursday April 5 from 7 to 9 p.m.

Contact: Bob Moffat, 253-845-5233 or

ramoat@me.com



Mortvedt Session

By Bob Moffat

We meet the second Friday each month at the Tacoma Lutheran Community's Mortvedt Recreation Center. Meetings are open to everyone, whether or not they live at TLC. Coaches from NorthWest Apple Pickers are available to answer questions about Macs and iPads for novices and veteran users. Attendees may bring their own Macs (or iPads) if they wish to work on issues with their own machines. The session topics are set by those who attend (and ask questions.)

Please join us at the Mortvedt Recreation Center on Friday April 13 from 10 a.m to noon.

Mortvedt Recreation Center,

1705 N. Vassault St.

Tacoma WA

Contact: Bob Moffat, 253-845-5233 or

ramoat@me.com

South Sound Adobe Users Group

The South Sound Adobe Users Group meets the **second Monday of the month**. We meet at the Tacoma Lutheran Community's Training Room, located at 1301 N. Highland Parkway.

(info and driving instructions at

<http://ssaug.org/TacomaLutheranDirections.pdf>)

We meet at 5:30 pm with an informal brown bag bring-your-own meal following by the presentations for the evening from 6:30 to 8:30. Our members include novices and experts in a variety of Adobe Creative Suite products, including Photoshop, InDesign, Illustrator, and Dreamweaver. Members who have attended three of the six meetings between January and June will be eligible to win valuable Adobe software in June. (A lucky member wins every six months!)

On Monday, April 9, we will feature another Photoshop tip, as usual. Then we continue the InDesign project demonstrating how to set up interactivity features for exporting to web or PDF formats. A subject using the letter "I" is our monthly photo challenge for April

General Meeting Report

March General Meeting Report

(by Val Dumond)

During a lively annual meeting of NWAP, 21 members discussed the future of the Apple Users group. Among suggestions was the formation of Special Interest Groups (SIGs), to meet the needs of individual members.

Among groups suggested were:

- Adobe (already meeting as the South Sound Adobe Users Group)
- iDevices (iPad, iPhone, iPod)
- Film Editing
- Photo Shop
- Personal finances

Members not in attendance will be asked to submit questions they would like answered — either through user groups or program themes.

Program ideas also were exchanged by the members. Foremost was the suggestion to form a panel discussion of users of iDevices to talk about the variety of their uses, along with the pros and cons they are experiencing. Subject matter would include carriers, pricing, services, and applications.

Other program ideas included: Mac Applications, Individual programs (Text Edit, Quicken, Photo Shop, Personal Finance, Cloud, IOS settings, Easy-Draw, BEAN, iWork and Pages).

So, Members, what's your pleasure? Please submit those questions you've always wanted to ask, but were afraid to raise your hand to: Lee Peden. All questions will be used as feedback from the mem-

(Continued Next Column)

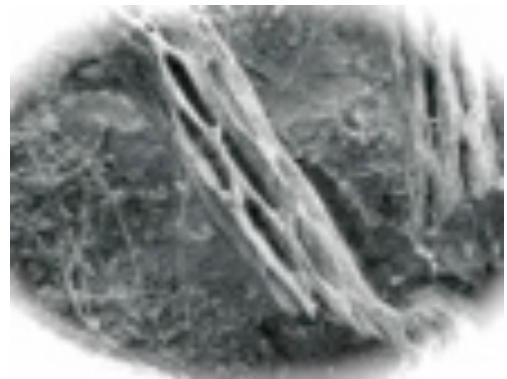
General Meeting Report

(Continued from Previous Column)

bership to determine the direction of NWAP through the next year. This is your opportunity to get involved.

April General Meeting ~ April 15 ~

The upcoming General Meeting, **a week AFTER Easter Sunday**, is going to explore some questions about processing words from the basic text editor TextEdit to the word processor Pages, including some of the newest quirks that Lion has added about saving documents. We bill the program as "(Almost) Everything you want to know but are afraid to ask about word processing." We hope to remind our members of some of the tips and tricks about using these applications that make it easy to produce notes, letters, and flyers, among other things. We'll try to make sense of The Inspector and other palettes, as well as other choices you have when you create a document.



Membership Report For March. 2012

By Francette Beeler

As Of Mar 13th, 2012

Total Memberships: 61

Membership Renewals:

Janet Baccus, David & Gloria Putman, Dwaine Baccus, Peter Winderling, John R. Walters, Lee Peden, Doug McDonald

Due in Mar: Lee Perry, Kathy Swanson, Helen & Jack Ellingson, Dixie Kelly,

Due in Apr: Kathryn "KaCe" Whitacre, Chuck Hayden

Meeting Attendance:

New User Group ~ Mar. 1st ~ 19 members ,
Mortvedt Center ~ Mar. 9th ~ 10 members,

Visitor Tom McClung.

Board Meeting ~ Mar. 11th ~ 9 members.

General Meeting ~ Mar. 11th ~ 20 members.

Visitor: Gary Werner

April 2012

May 2012

| Sun | Mon | Tue | Wed | Thu | Fri | Sat | Sun | Mon | Tue | Wed | Thu | Fri | Sat |
|--|---|-----|-----|--|--|---|--|--|-----------------------|-----|--|--|---|
| 1 Palm Sunday | 2 | 3 | 4 | 5 New User Group 7 pm Lakewood Lib | 6 Good Friday Passover Pesach 8:00 am | 7 | | | 1 | 2 | 3 New User Group 7 pm Lakewood Lib | 4 | 5 Cinco de Mayo |
| 8 Easter | 9 South Sound Adobe UG 5:30 pm | 10 | 11 | 12 | 13 Mortvedt Session 10 - noon Mortvedt Rec | 14 TAPCUG 9:30 am Lakewood Senior Ctr | 6 | 7 | 8 | 9 | 10 | 11 Mortvedt Session 10 - noon Mortvedt Rec | 12 TAPCUG 9:30 am Lakewood Senior Ctr |
| 15 Board Mtg 1:30 pm General Mtg 3 pm Lakewood Lib | 16 | 17 | 18 | 19 | 20 | 21 | 13 Mother's Day | 14 South Sound Adobe UG 5:30 pm | 15 | 16 | 17 | 18 | 19 |
| 22 Earthday | 23 | 24 | 25 | 26 | 27 | 28 | 20 Board Mtg 1:30 pm General Mtg 3 pm Lakewood Lib | 21 | 22 | 23 | 24 | 25 | 26 |
| 29 | 30 | | | | | | 27 | 28 Memorial Day | 29 JFK Birthday | 30 | 31 | 1 | 2 |
| | | | | | | | 5 | 4 | 5 | 6 | 7 New User Group 7 pm Lakewood Lib | 8 Mortvedt Session 10 - noon Mortvedt Rec | 9 TAPCUG 9:30 am Lakewood Senior Ctr |

Check the NWAP Website For Updated/CurrentCalendar Info. <www.nwapplpkr.org>

Printing Services for NWAP
are performed by
Minuteman Press
Puyallup, WA 253.841.3161
www.minuteman-puyallup.com

Photo by
Peter Winderling
The Location is
Someplace on Mt Rainier

Web Hosting for NWAP
is powered by
www.hostingrails.com



North West Apple Pickers
PO Box 99388
Lakewood WA 98496

